



The building's facade today



The building's facade after it will be renovated (illustration)



# Renovating the Main Building's Façade and Lobby

## Current Conditions

Under the leadership of Galilee Medical Center's general director, Prof. Masad Barhum, the hospital is undergoing a comprehensive transformation in order to upgrade the quality and scope of its services. An important aspect of this transformation involves renovating physical spaces that are run-down and incompatible with modern healing environments.

As part of its strategic plan to improve patients' and visitors' overall experience, GMC is eager to repair and upgrade its entrance plaza and main hospital building, which is over 30 years old. At the time when it was built, inferior materials were used for the façade and flooring due to budgetary constraints and, as a result, both the building's exterior and its entrance lobby are dilapidated and downright unsightly. The lobby floor has broken tiles, many of which have been patched up in an ad hoc manner. The overall impression when entering the hospital building is unpleasant and off-putting – the opposite of the modern, reassuring environment that Prof. Barhum and his team would like to convey.

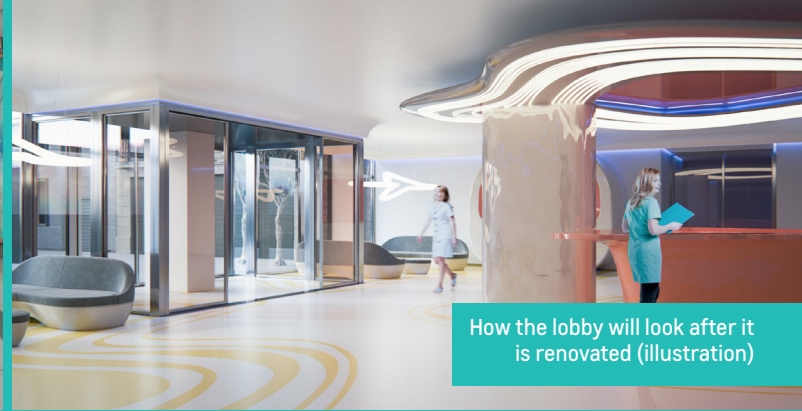
The first phase of this project has already been completed: replacing the tiles of the entrance plaza outside the main building and adding a pergola connecting the main building with the out-patient clinics. The new floor was designed by the internationally renowned industrial designer Karim Rashid, using a holistic approach and innovative anti-bacterial materials.

The second phase of this project entails renovating the main building's exterior façade and entrance lobby. The new lobby will include the hospital's main reception area and a coffee corner operated by volunteers.





The lobby of the main building today



How the lobby will look after it is renovated (illustration)



## Planned Project

A plan for the second phase of the entrance renovation project has already been prepared. Work will begin as soon as adequate funding is obtained.

The plan has two main elements:

- 1. A new façade for the main building.** The new façade has already been designed by Karim Rashid. It will feature aluminum plating and textured glaze that harmonize with the new flooring in the entrance plaza. The façade project also includes a new entrance door for pedestrians and stretchers as well as a special Shabbat entrance.
- 2. Renovation of the building's lobby.** The renovated lobby will also be designed by Karim Rashid. It will include new flooring, ceilings and walls, using innovative anti-bacterial materials as required by the Israel Standards Institute. It will also include a new and improved reception area and coffee corner.

The completion of this project is expected to have a dramatic effect on the overall experience of visiting Galilee Medical Center. Patients, as well as their families and friends, will enjoy a much more pleasant and comforting atmosphere from the moment they arrive. Today, the experience is quite the opposite – a fact which also impacts the patients' health and overall condition.

## Budget

The estimated cost of the new façade is \$1M and the estimated cost of the lobby renovation is \$450,000.

Therefore, the total budget for this renovation project is **\$1.45M**, including planning and design, materials and work.

Donors will receive prominent recognition.



For more information about Galilee Medical Center and to donate, please contact:  
Avrum Lapin, Director, **American Friends of Galilee Medical Center**. Tel: (215) 885-1550,  
POB 789856, Philadelphia PA 19178-9856, Email: [alapin@thelapingroup.com](mailto:alapin@thelapingroup.com), [www.afgmc.org](http://www.afgmc.org)

The AFGMC is a 501(c) 3 nonprofit organization. Donations are tax exempt according to IRS regulations.